

# HUNTERS®

HERE TO GET *you* THERE



## King William Street

Stourbridge, DY8 4EP



Council Tax: A

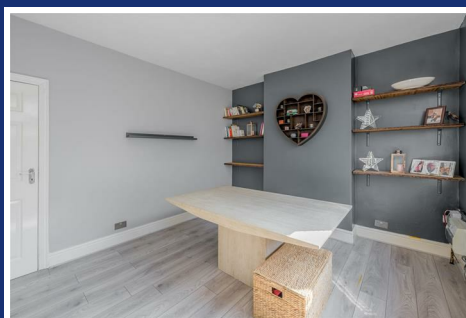




# King William Street

Stourbridge, DY8 4EP

£210,000



## Front of the Property

To the front of the property is a dwarf wall with path leading to the front door, there is also access through the shared side passageway with a further door leading into the kitchen.

## Dining Room

12'9" x 11'5" (3.9 x 3.5)

With a double glazed composite door leading from the front of the property, double glazed window to the front, door to the lounge and a central heating radiator.

## Lounge

12'9" x 12'5" (3.9 x 3.8)

With a door leading from the dining room, this cosy room has a log burning stove with beam above and tiled hearth, door with stairs to the first floor, door to the kitchen, laminate flooring, double glazed window to the rear and a central heating radiator.

## Kitchen

15'5" x 7'6" (4.7 x 2.3)

With a door leading from the lounge this modern kitchen is fitted with a range of shaker style wall and base units, oak work surfaces with matching up stands, one and a half belfast sink, integrated electric oven and hob with extractor above, integrated fridge, freezer and washing machine, cupboard housing boiler, recessed spotlights, doors to the bathroom and side entry, double glazed door leading to the garden, two double glazed windows to the side and a central heating radiator.

## Bathroom

With a door leading from the kitchen, bath with shower over, WC, wash hand basin, tiled flooring, chrome heated towel rail, double glazed window to the rear and a central heating radiator.

## Landing

With stairs leading from the lounge, loft access and doors to various rooms.

## Bedroom One

12'5" x 12'5" (3.8 x 3.8)

With a door leading from the landing, useful storage cupboard, double glazed window to the rear and a central heating radiator.

### Bedroom Two

11'5" x 9'10" (3.5 x 3)

With a door leading from the landing, double glazed window to the front and a central heating radiator.

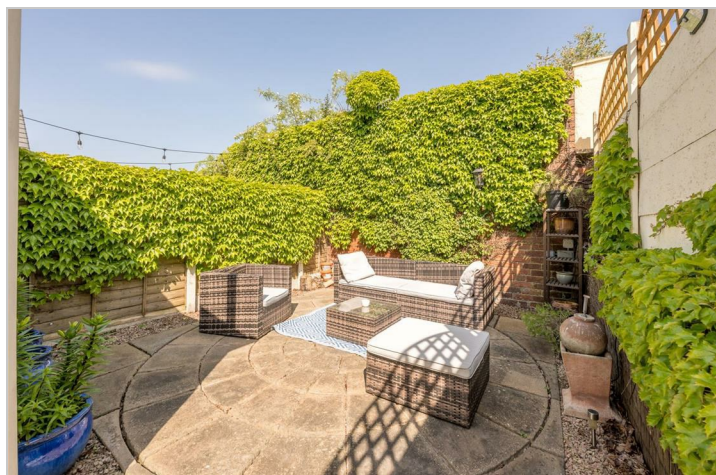
### Bedroom Three

12'9" x 5'10" (3.9 x 1.8)

With a door leading from the landing, double glazed window to the front and a central heating radiator.

### Garden

With access from the kitchen, this low maintenance courtyard style garden offers a private and peaceful setting with a patio area and gravelled border.



Road Map



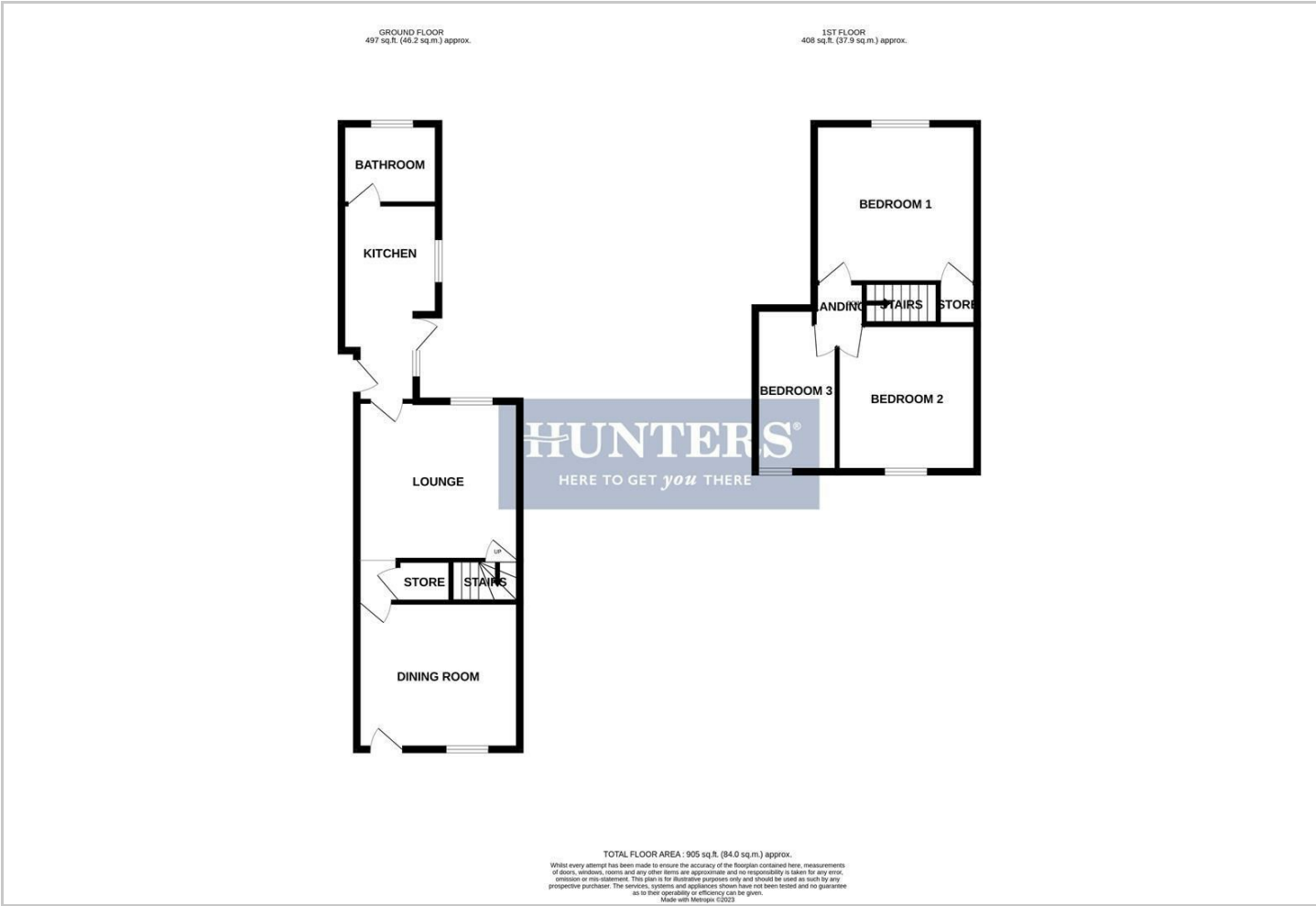
Hybrid Map



Terrain Map

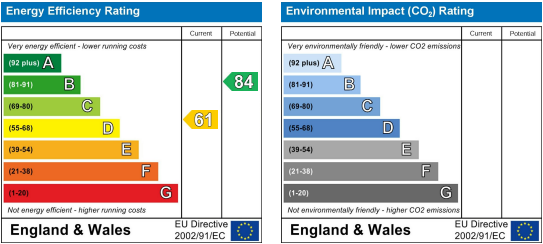


Floor Plan



Energy Efficiency Graph

Please contact our Hunters Stourbridge Office on 01384 443331 if you wish to arrange a viewing appointment for this property or require further information.



These particulars are intended to give a fair and reliable description of the property but no responsibility for any inaccuracy or error can be accepted and do not constitute an offer or contract. We have not tested any services or appliances (including central heating if fitted) referred to in these particulars and the purchasers are advised to satisfy themselves as to the working order and condition. If a property is unoccupied at any time there may be reconnection charges for any switched off/disconnected or drained services or appliances - All measurements are approximate. **THINKING OF SELLING?** If you are thinking of selling your home or just curious to discover the value of your property, Hunters would be pleased to provide free, no obligation sales and marketing advice. Even if your home is outside the area covered by our local offices we can arrange a Market Appraisal through our national network of Hunters estate agents.